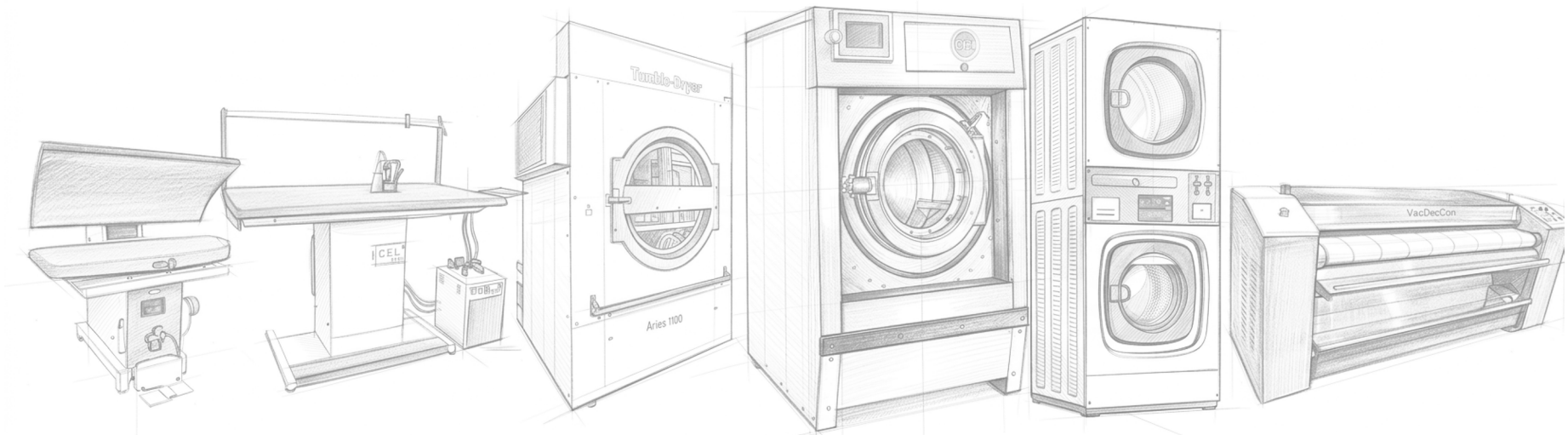




COMMERCIAL LAUNDRY MACHINES



www.laundrymachine.co.in



Our Inspiration

“Arise! Awake! And stop not till the goal is reached.”

-Swami Vivekananda





Our Legacy

Since 1951, Gupta Electrical Industries (GEI) has stood for precision, trust, and uncompromising quality.

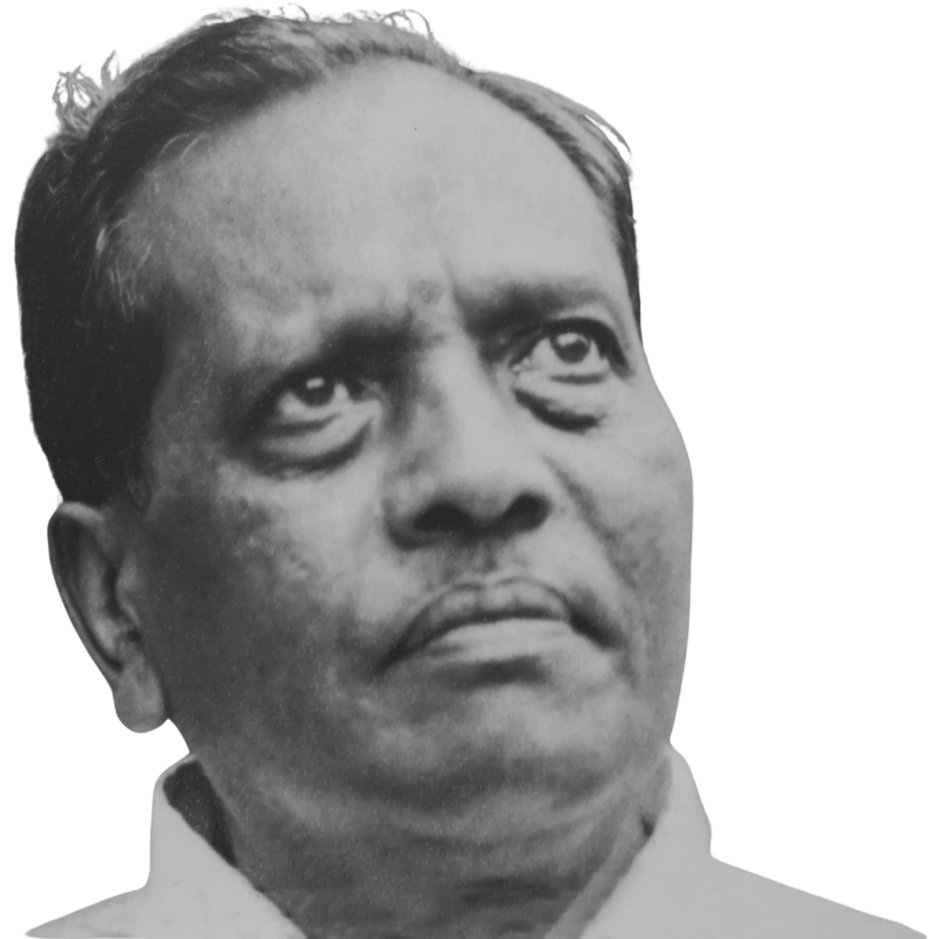
Founded by **Sri K. L. Padmanabha Gupta**, our journey began with a clear vision - to engineer products that last, perform, and deliver value.

Today, GEI is one of India's leading manufacturers of Commercial Laundry Machines, serving residential schools, garment factories, hospitals, hotels, laundromats, residential schools, and large-scale cleaning operations. Every machine is built for high efficiency, rugged durability, and powerful cleaning performance, helping businesses run smoother and smarter.

As a proud contributor to the Make in India movement, we continue to innovate, evolve, and set new standards in the commercial laundry space ensuring our customers receive not just products, but reliability, confidence, and long-term value.

A handwritten signature in black ink, appearing to read 'Sri K. L. Padmanabha Gupta', is positioned above a horizontal line.

Sri K. L. Padmanabha Gupta





1951

GEI was established as an Electrical Trade Unit.



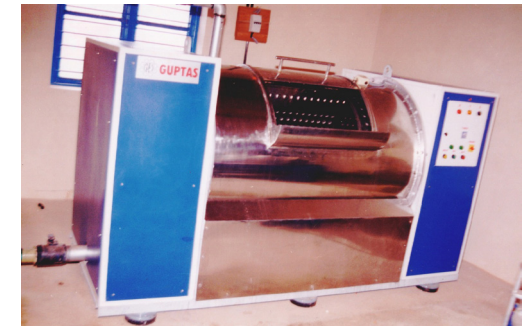
1968

Transitioned to manufacturing Electrical Stoves



1981

Inaugurated our factory at Peenya, Bengaluru



1998

Started Manufacturing GEI Laundry Machines

Our Journey

2006

Upgraded infrastructure to CNC Machines



2016

Indigenously developed Washer Extractors



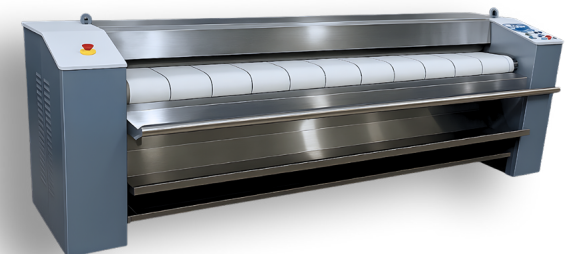
2019

Developed OZONE Wash Technology



2025

Developed 2 Meter Gas Fired Flatwork Ironer



GEI Today





About Us

GEI (Gupta Electrical Industries) is a trusted manufacturer of commercial laundry equipment in India, offering advanced washing, drying, and finishing solutions. Our machines serve hospitals, hotels, garment units, schools, and laundromats with reliable, high-performance results.

25+

Years of Experience

500+

Laundry Machines Installed

5+

Expert Service Teams

10+

States Supplied in

20+

States Supplied in



Advanced Manufacturing

Our state-of-the-art manufacturing facility features CNC machines for precision engineering & consistent quality.

Rich History

Established in 1981, we bring over four decades of trust and reliability to our customers.



Complete Solutions

From concept to commissioning, we provide turnkey solutions for all your commercial laundry needs.

Certified Quality

We are ISO certified by TUV(SAAR), ensuring every machine meets international quality standards.

Our Clients



Industries we serve



Hostels



Residential Schools



B2B Laundromats



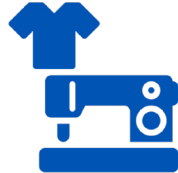
B2C Laundromats



Food Processing
Industries



Pharmaceutical
Industries



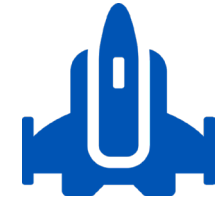
Garment Industries



Navy



Army



Airforce



Hospitals



Hotels/Resorts



Nuclear Power
Plants



Sports Schools



Old Age Homes

Beyond machines



Pre Sales Consultation

GEI provides expert consultation to understand customer requirements and recommend the most suitable laundry solutions. Our team assists in layout planning, capacity selection, and workflow optimization to ensure maximum efficiency and cost-effectiveness before installation.



After Sales Support

We offer prompt technical assistance, regular maintenance support, and easy access to genuine spare parts. Our trained service engineers ensure minimal downtime and long-term performance through scheduled servicing and quick troubleshooting.



After Sales Service

GEI follows a structured customer service system with dedicated support teams. With a wide service network and responsive help-line, we ensure fast resolution of service requests, continuous operational support, and complete customer satisfaction.



Engineering Services

Our engineering team manages site evaluation, machine installation, commissioning, and operator training. We follow standardized procedures to deliver safe, efficient, and reliable system integration tailored to each customer's operational needs.



Washer Extractor

The **GEI Washer Extractor** gives you the best of both worlds as it is a hybrid of washing machine & Spin Dryer. Washer extractors get their name for their aggressive spin-cycle, which is designed to remove excess moisture out of the clothes. After washing clothes it extracts maximum water.



LCD Display

Compact machine, easy floor/terrace installation, smooth loading door & 300G+ extraction to cut drying time, energy use & costs.

Make in India spares availability, AMC support, trained engineers & optional O3 wash to remove bacteria, fungus & mold while reducing utility & detergent costs.

Durable heavy-duty build with quality bearings & a motorized drain for faster water discharge & quicker cycles.

5-compartment detergent dispenser with a large, user-friendly LCD & customizable wash programs.

GEI Washer Extractor

Specification	Units	GWE-11	GWE-20	GWE-30	GWE-45	GWE-60	GWE-120
Capacity	Kg	11	20	30	45	60	120
Drum Size (Dia x L)	Mm	620x330	680x540	800x590	940x690	1020x760	1350x850
Volume	Liters	100	200	305	480	620	1125
Washing Speed	Rpm	55	48	40	37	39	35
Low Extraction Speed	Rpm	500	500	500	500	500	450
High Extraction Speed	Rpm	1000	950	900	850	825	700
G Factor	G	350	350	350	340	340	320
Motor	HP/Kw	2/1.5	3/2.2	5/3.75	10/7.5	15/11.1	30/22.3
Electrical Heating Power	Kw	6	12	12	18	24	36
Dimensions LxWxH	Mm	900x850x1200	950x1200x1500	1000x1250x1500	1250x1400x1900	1350x1450x2000	2000x1200x2600
Machine Weight	Kg	300	650	750	1150	1650	4000



Washer Extractor

E - SERIES



GEI Washer Extractor **E - SERIES**

Specification	Units	GWE-15E	GWE-20E	GWE-25E	GWE-30E	GWE-50E	GWE-100E
Capacity	Kg	15	20	25	30	50	100
Drum Size(Dia x Depth)	mm	700 x 400	700x550	800x500	900 x 530	1070 x 600	1230 x 830
Volume	Ltr	155	215	255	340	540	1000
Wash speed	Rpm	-	-	-	38	38	38
High Extraction Speed	Rpm	-	-	-	750	700	660
G- Force	G	-	-	-	340	330	310
Motor power	kW	1.5	2.2	3	4	5.5	7.5
Electrical heating	kW	6	6	12	18	24	36
Steam consumption	Kg/Hr	12	15	20	20	35	68
Dimensions (W x L x H)	mm	1000x1030x1560	1200x1030x1560	1200x1380x1760	1325x1320x1800	1650x1650x1900	1800x2100x2300
Weight	Kg	700	800	800	1500	2500	3250



Stacker Washer Dryer

The **GEI Stacker Washer Dryer** is a space-saving unit with the tumble dryer mounted above the washer extractor in one compact machine. It delivers efficient and fast washing & drying with smooth, low-vibration performance. Easy-to-use touchscreen controls, simple maintenance access, and multiple heating options make it reliable & convenient for everyday use.

GEI Stacker Washer Dryer

Specification	Units	GSWD-10	GSWD-15
Washer's capacity	Kg	10	15
Washer cylinder diameter	Mm	532	600
Washer cylinder depth	Mm	405	478
Washer volume	Liters	90	135
Extraction speed	RPM	200-1050	200 - 950
G-force	G	330	300
Washer drive motor	Kw	1	0.75
Washer single phase heating power	Kw	2	6
Washer three-phase heating power	Kw	6	9

GEI Stacker Washer Dryer

Specification	Units	GSWD-10	GSWD-15
Dryer's capacity	Kg	10	15
Dryer cylinder diameter	Mm	658	720
Dryer cylinder depth	Mm	500	635
Dryer volume	Liters	170	258
Dryer air flow	m ³ /Hr	650	920
Extraction speed	RPM	200-1050	200-1050
Blower Motor	Kw	0.25	0.25
Drive Motor	Kw	0.25	0.25
Dryer single phase heating power	Kw	7.5	10.5
Dryer three-phase heating power	Kw	7.5	10.5

GEI Stacker Washer Dryer

Specification	Units	GSWD-10	GSWD-15
Overall width	Mm	710	800
Overall depth	Mm	859	994
Overall height	Mm	1929	2055
Net weight	Kg	260	360

Soft-mount design with springs, shock absorbers, and a belt driven washer with a 3D honeycomb drum.

Stainless-steel dryer with axial-radial air-flow and an easy front lint-filter drawer.

Touchscreen controls with multiple programs, USB/networking, and full audit data.

Double door locks, chemical dosing system, easy service access, and electric (washer) or electric/gas (dryer) heating.



Tunnel Washing Machine

The **GEI Tunnel Washing Machine** delivers a fully automated, high-efficiency laundry solution with advanced water and energy recycling. It reduces water, electricity, and manpower usage while minimizing sewage output, making it an eco-friendly, cost-effective, and future-ready industrial washing system.

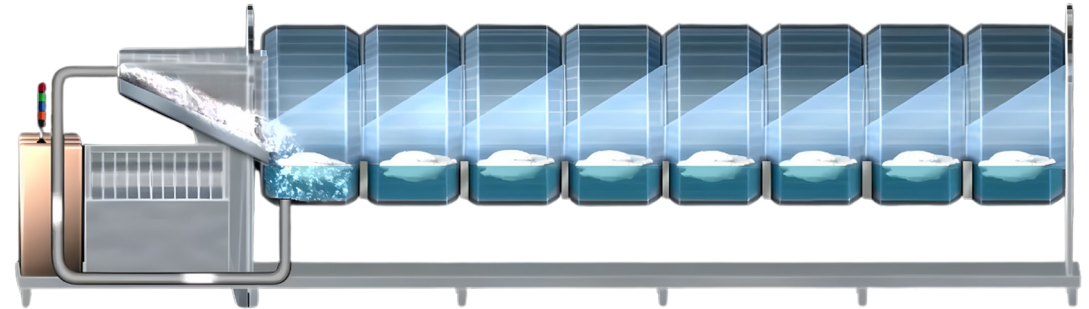


Adopting European technology, simple structure, convenient operation and maintenance

Each cabin equipped with inner cylinder, detergent and steam can be set flexibly

Cloth grass transferred at bottom, reducing jam and damage

Both the inner cylinder and aisle with small holes for drainage, reverse flow design, avoiding color contamination.



GEI Tunnel Washing Machine

Specification	Units	GTWM-5	GTWM-6	GTWM-7	GTWM-8	GTWM-9	GTWM-10
Number Of Modules	Modules	5	6	7	8	9	10
Maximum Wash Volume	Kg/h	1071	1286	1500	1714	1929	2143
Diameter Of The Cage	Mm	2010	2010	2010	2010	2010	2010
Depth Of The Cage	Mm	820	820	820	820	820	820
Volume	Dm3	2670	2670	2670	2670	2670	2670
Capacity	Kg	60-75	60-75	60-75	60-75	60-75	60-75
Speed	Rpm	11-18	11-18	11-18	11-18	11-18	11-18
Power	Kw	22.5	26.15	30.9	35.65	39.5	43.15
Power Consumption	Kw/h	13.14	15.34	18.13	20.91	23.11	25.31
Length	Mm	7580	8580	9580	10580	11580	12580
Width	Mm	3000	3000	3000	3000	3000	3000
Height	Mm	3345	3345	3345	3345	3345	3345
Weight	Kg	6050	7050	8050	9050	10050	11050



Barrier Washer

The GEI Barrier Washer features a dual-zone drum that separates sterile and non-sterile areas to prevent cross-contamination. With clean-air control, hygienic handling, and smooth, low-vibration operation, it's ideal for hospitals, pharma, and food facilities. Easy touchscreen control and a secure locking system ensure safe, reliable performance.

Dual-door barrier design with a divided drum separates contaminated and clean zones, preventing cross contamination in hygienic environments.

Advanced wash technology with programmable cycles ensures thorough, efficient cleaning for hospitals, pharmaceutical, and food-processing facilities.

Heavy-duty stainless steel construction with low-vibration operation provides durability, stability, and long service life.

User-friendly touchscreen controls with an interlocking door safety system ensure secure, reliable, and easy operation.

GEI Barrier Washer

Specification	Units	GBW-30	GBW-50	GBW-70	GBW-100
Capacity(kg/car)	kg	30	50	70	100
volume	L	301	506	705	1000
Washing speed	RPM	40	40	40	30
Mid Extraction Speed	RPM	375	340	340	340
High Extraction Speed	RPM	700	680	650	650
Compressed air presure	MPa	0.5-0.6	0.5-0.6	0.5-0.6	0.5-0.6
Motor power	KW	4	5.5	7.5	7.5
Overall dimension Lxwxh	mm	1420*1350*1800	1590*1460*1875	1650*1640*2050	1950*1640*2050
Weight (approx.)	kg	1500	1800	2600	3000



Side Loading Washing Machine

The **GEI Side Loading Washing Machine** is a heavy-duty, semi-automatic unit made from 304 stainless steel for bulk washing, dyeing, and bleaching. It features a strong inner drum, smooth gearbox system, safety door, and user-friendly controls for reliable industrial performance.



Heavy-duty side loading washing machine designed for bulk washing, dyeing, and bleaching in industrial laundry operations.

Strong inner drum and smooth gearbox transmission ensure stable performance and efficient washing cycles.

Constructed with high-grade 304 stainless steel for superior durability, corrosion resistance, and long service life.

Safety door mechanism and user-friendly controls provide secure, reliable, and easy operation for industrial use.

GEI Side Loading Washing Machine

Specification	Units	GWM-25	GWM-50	GWM-100	GWM-150	GWM-200
Capacity	Kg	25	50	100	150	200
Drum Size (Dia x Length)	mm	740x940	900x1250	1240x1200	1100x2220	1240x2300
Volume	Ltr	400	800	1450	2000	2850
Drive Motor	HP	2	5	7.5	10	15
Electrical Heating Power	kW	6	12	18	24	-
Steam heating	Kg/hr	40	80	120	200	300
Water Connection		1”BSP	2”BSP	2”BSP	2”BSP x 2Nos	2”BSP x 2Nos
Drain Dia	Mm	75	75	75	75 x 2	75 x 2
Dimensions L x W x H	Mm	1700x1150x950	2250x1350x1100	3200x1525x1350	3800x1525x1350	3800x1525x1700



Hydro Extractor

The **GEI Hydro Extractor** efficiently removes 75 to 85 percent water from wet garments using powerful centrifugal action. Its inner drum is made of stainless steel with fine perforations for fast water extraction, while the outer drum combines a stainless steel upper section with a heavy-gauge, galvanized and painted mild steel base for long life and durability.



GEI Hydro Extractor 3 Leg Suspension

Specification	Units	GHE-50-3L	GHE-100-3L
Capacity	Kg	50	100
Basket Size	Mm	920 x 350	1070 x 400
Volume	Liters	235	340
Basket Speed	RPM	900	900
Motor Capacity	HP	7.5	10
Drain	Mm	Dia 75	Dia 100
Overall Dimensions	Mm	1630 x 1630 x 1150	1830 x 1830 x 1200

GEI Hydro Extractor Direct Drive Type

Specification	Units	GHE-15-DD	GHE-25-DD
Capacity	Kg	15	25
Basket Size	Mm	500 x 330	700 x 345
Volume	Liters	65	135
Basket Speed	RPM	960	960
Motor Capacity	HP	2	3
Drain	Mm	Dia 50	Dia 75
Overall Dimensions	Mm	1350 x 1350 x 1025	1630 x 1630 x 1150



Tumble Dryer

The **GEI Tumble Dryer** is a machine that is used to remove moisture from a load of linen, bedsheets and other textiles, usually shortly after they are washed in a washing machine or washer extractors. It is used for 100% drying of clothes after wash & spin dry.

Available in Electric, Steam & Gas heating options with 5 programmable settings.

Mild-steel powder-coated body built for long life and rugged use.

Inner drum with lifters and industrial-grade control components for stable, efficient performance.

Hinged panels and Make-in-India parts ensure easy access, quick maintenance, and simple repairs

GEI Tumble Dryer

Specification	Units	GTD-15	GTD-30	GTD-50	GTD-60	GTD-75	GTD-120
Capacity	Kg	15	30	50	60	75	120
Drum Size (Dia x Length)	mm	750 x 675	950 x 870	1150 x 940	1220 x 1050	1380 x 1050	1600 x 1255
Volume	Ltr	300	616	1000	1250	1500	2500
Drive Motor	HP/Kw	0.5/0.37	1/0.74	2/1.50	2/1.50	3/2.20	5/3.75
Blower Motor	HP/Kw	0.5/0.37	1/0.74	2/1.50	2/1.50	3/2.20	3/2.20x2
Electric Heating Power	Kw	12	18	24	40	48	-
Gas Heating	Kg/hr	NA	50	100	120	150	200
Steam Heating	Kg/hr	NA	50	100	120	150	200
Dimensions (H x W x L)	mm	1750 x 850 x 1100	2000 x 1150 x 1500	2250 x 1350 x 1600	2300 x 1450 x 1750	2500 x 1550 x 1750	2300 x 2000 x 2050
Machine Weight	Kg	400	500	700	850	1200	1700



Tumble Dryer

E - SERIES

GEI Tumble Dryer **E - SERIES**

Specification	Units	GTD-15(E)	GTD-20(E)	GTD-25(E)
Capacity	Kg	15	20	25
Drum Size	mm	750X500	770X600	970X700
Engine Heating Power	kW	0.12	0.2	0.4
Converter power	kW	1.5	2.2	3.7
Machine weight	Kg	300	360	500
Steam consumption	kg/h			24
Overall Dimension	mm	900x900x1560	890x1050x1560	106x1250x2000

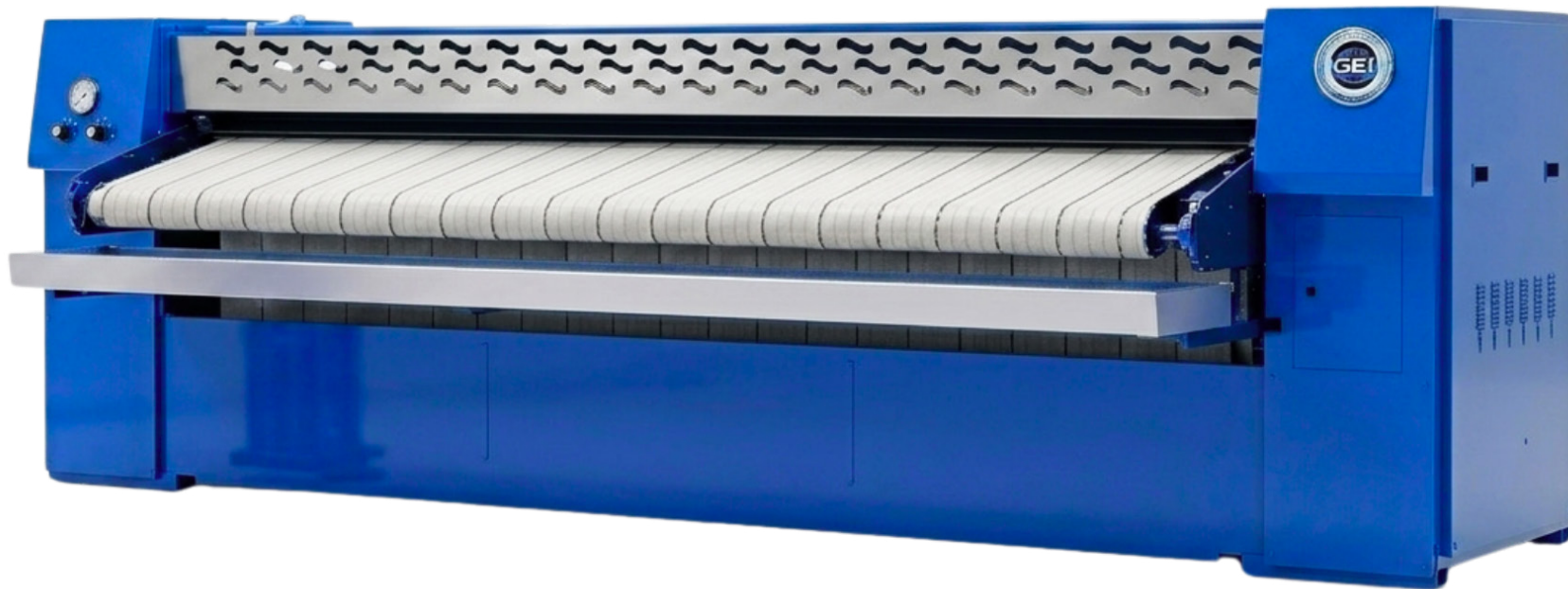
GEI Tumble Dryer **E - SERIES**

Specification	Units	GTD-30(E)	GTD-50(E)	GTD-100(E)
Capacity	Kg	30	50	100
Drum Size (Dia x Length)	Mm	942 x 930	1160 x 1000	1450 x 1250
Volume	Liters	650	1056	2064
motor power	Kw	0.75	1.1	2.2
Electrical heating	Kw	28	44	60
Steam consumption	Kg/hr	40-60	60-80	90-120
Gas consumption	Kg/hr	2.5	3.5	6
Width x Depth x Height	Mm	1120x1580x1750	1340x1640x2080	1630x2020x2440
Weight	Kg	420	700	1300



Flat Work Ironer Single Roll

Clothes like bed sheets, pillow covers, table linens are ironed in this machine. The ironer has a sizable heated roller & the clothes are fed into it to iron & dry them.



A variable speed drive for different speeds of roller are provided for efficient removal of moisture

Emergency stop buttons are provided on either side of the machines to ensure operator safety

Electrical panel is equipped with digital temperature indicator and digital speed indicator

Roll length & The supply voltage can be customized as required

GEI Flatwork Ironer Single Roll

Specification	Units	GFWI-2000	GFWI-3300
Roller Length	Mm	2000	3300
Roller Diameter	Mm	400	800
Steam Heating	Kg/ hr	NIL	150
Gas Heating	Kg/ hr	1.5	4
Electric Heating	kW	30	36
Motor Power	Kw	0.75	1
Pressure of Steam	Mpa	0.4-0.6	0.4-0.6
Speed of Ironing	Mtr/min	7.5	7.5
Net Weight	Kg	900	1300
Overall dimension LxWxH	Mm	2800 x 1050 x 1100	4200 x 1400 x 1250



Flat Work Ironer Multi Roll

Clothes like bed sheets, pillow covers, table linens are ironed in this machine. The ironer has a sizable heated roller & the clothes are fed into it to iron & dry them.



A variable speed drive for different speeds of roller are provided for efficient removal of moisture

Emergency stop buttons are provided on either side of the machines to ensure operator safety

Electrical panel is equipped with digital temperature indicator and digital speed indicator

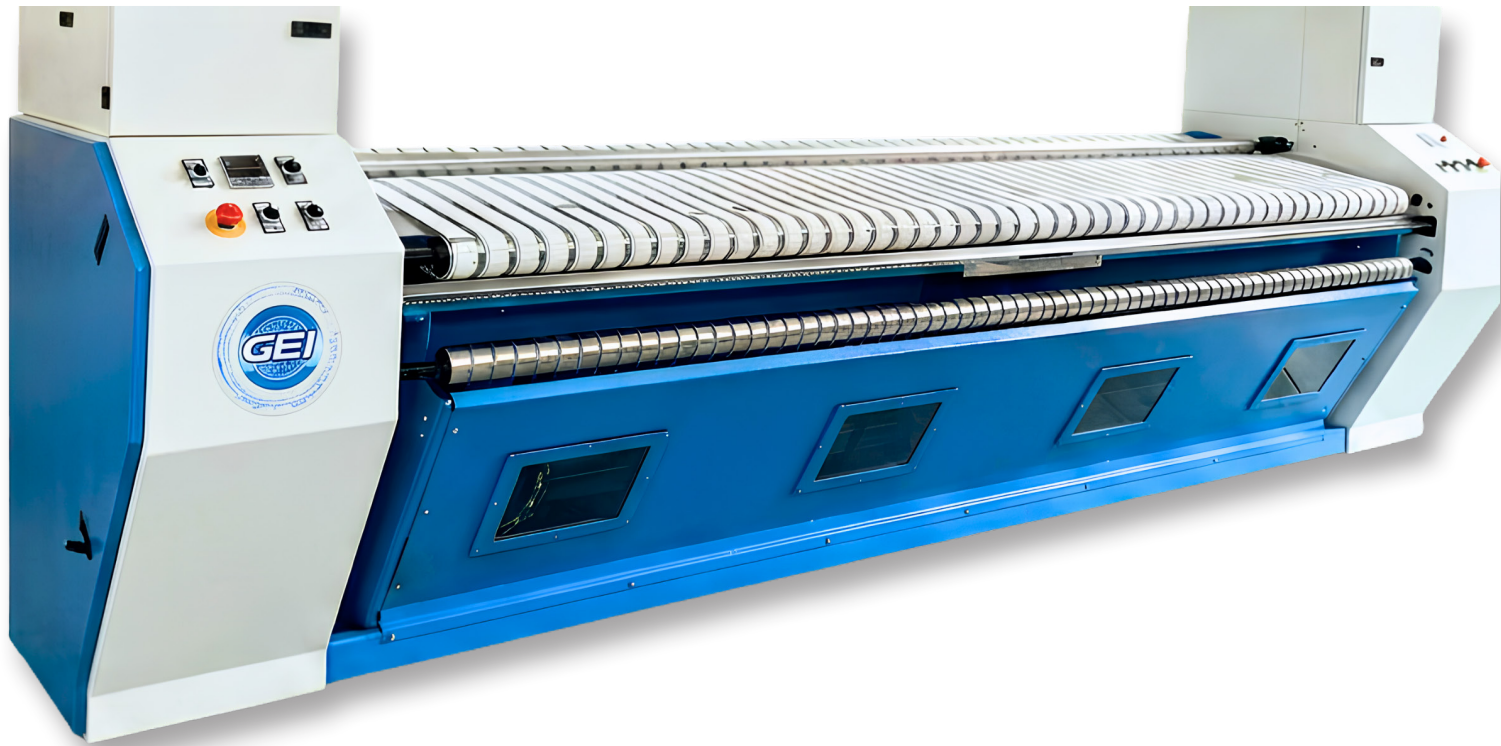
Roll length & The supply voltage can be customized as required

GEI Flatwork Ironer Multi Roll

Specification	Units	GFWI-3300-2RL	GFWI-3300-3RL	GFWI-3300-4RL	GFWI-3300-5RL	GFWI-3300-6RL
Number of rolls	Nos	2	3	4	5	6
Maximum working width	mm	3300	3300	3300	3300	3300
Diameter	mm	800	800	800	800	800
Conveying speed	m/min	3-20m/min	3-25m-/min	3-15m/min	3-20m/min	3-25m/min
Motor power	kW	1.5	1.5	2.2	3	3
Electrical heating	kW	80	120	160	-	-
Steam consumption	Kg/hr	200	300	400	500	600
Gas consumption	Kg/hr	25	35	45	60	70
Overall Dimension (W x L x H)	mm	4500x2500x 1400	4500x3450x 1400	4500x4400x 1400	4500x 5350x 1400	4500x6300x 1400
Weight	Kg	2600	4000	5000	6300	7500



Feeder Machine



Ergonomic feeder system designed for economical artificial feeding with minimal maintenance.

Handles a wide range of linen sizes including napkins, pillowcases, tablecloths, bedspreads, and bed linen.

Multi-lane configuration supports operation on 1, 2, or 4 lanes for higher productivity.

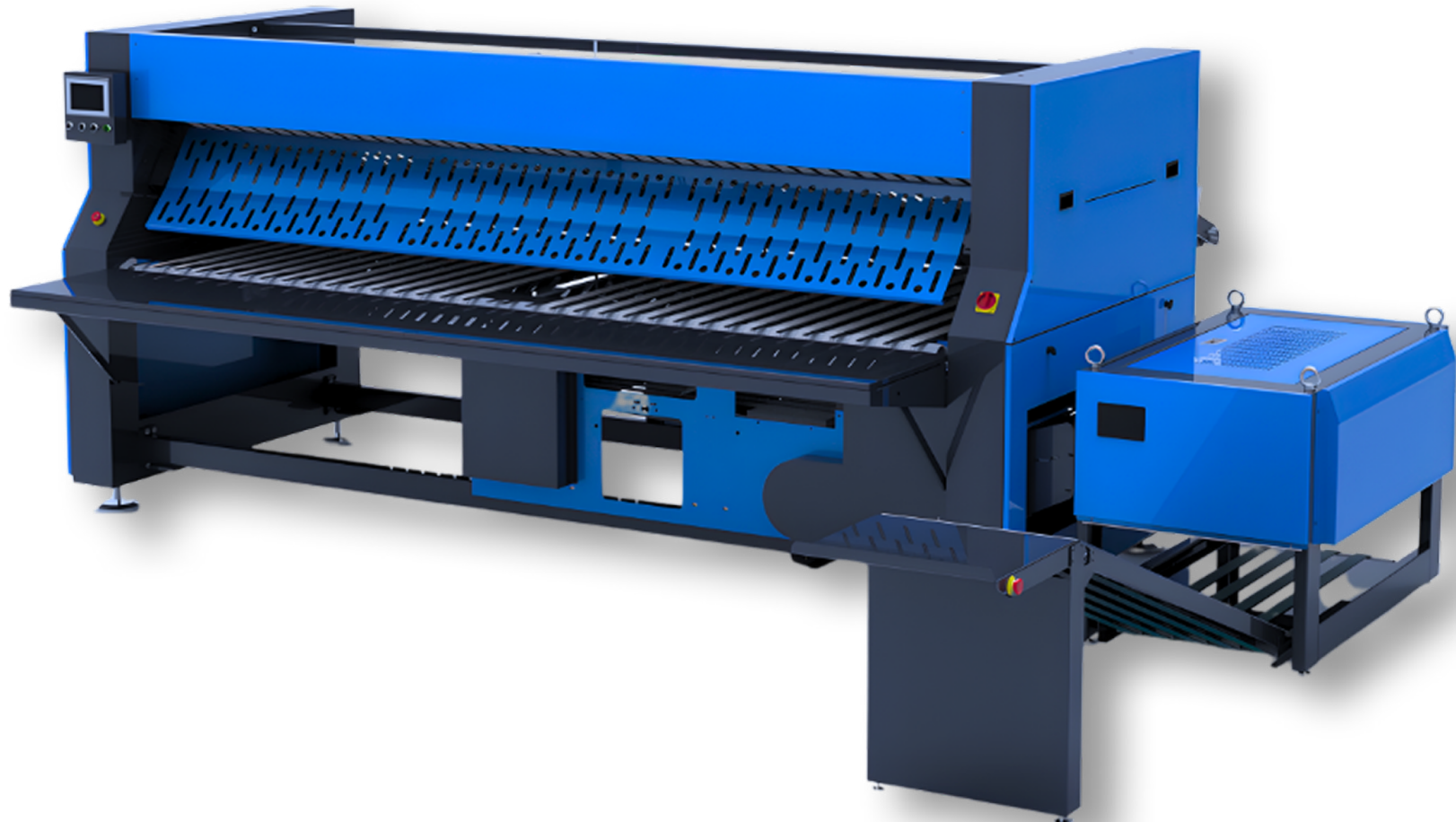
Optional widening clamps allow a single operator to feed large items quickly and uniformly.

GEI Feeder Machine

Specification	Units	GFM-3300
Linen Feeding Width	mm	3300
Max Linen Feeding Speed	m/min	52
Power Supply	V/Hz	380/50
Power	kW	3.6
Overall Dimensions	mm	4500 x 1350 x 1600



High Speed Folding Machine



GEI High Speed Folding Machine

Specification	Units	GFM-3300
Working width	Mm	3300
Maximum processing specification	Mm2	3300 x 4500
Channel	Nos	4
Maximum number of folded layers	Inch	5
Conveying speed	mm	4500 x 1350 x 1600

GEI High Speed Folding Machine

Specification	Units	GFM-3300
Air inlet	-	DN10
Air pressure	MPa	0.6
Air consumption	l/h	400
Width x Depth x Height	Mm	4500 x 2950 x 1800
Weight	Kg	2450

Electrical Connection

Specification	GFM-3300
Voltage system	3-Phase AC 380V 50Hz
Main motor power	1.5 Kw 4P
Drive motor power	1 x 0.75 Kw 4P +1 x 0.55 Kw 4P
Main motor inverter power	1 x 1.5 Kw
Drive motor inverter power	2 x 0.8 Kw
Total machine input 3.	3. 1 Kw
Conductor section	4 x 2.5

Designed to handle various linens such as sheets and quilt covers without changing programs, improving workflow efficiency.

Equipped with high-quality components like Schneider electricals, Omron systems, TR bearings, and frequency converters for reliable, long-lasting performance.



Towel Folding Machine

The **GEI Towel Folding Machine** delivers fast, precise, and consistent folds every time. Engineered for heavy-duty performance, it boosts productivity, reduces manual effort, and ensures a neat, professional finish for every towel. Built for reliability and efficiency in high-volume operations.



GEI Towel Folding Machine

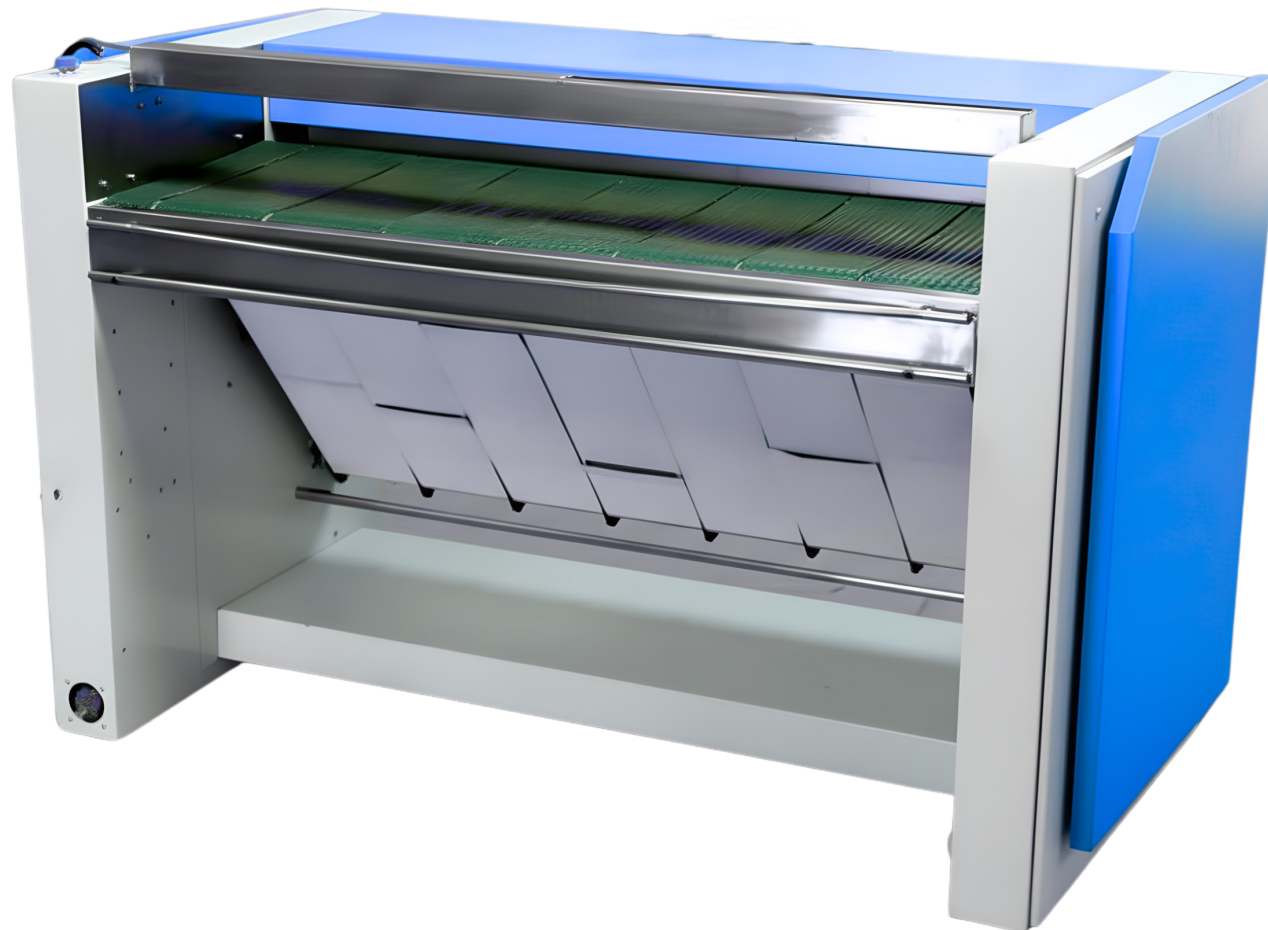
Specification	Units	GTF800
Conveying rate	Kg	50
Electrical power	Mm	3.15
Power supply	Liters	380
Steam Heating	Rpm	1.62
Overall dimension (H x W x L)	Rpm	1465 x 2432 x 3540
Machine Weight	Rpm	950

GEI Towel Folding Machine

Specification	Units	Type of Linen	Type of Linen
Folding Width	Mm	Bath towel	(French fold) 600-950 mm
	Mm		(4 Fold) Max 1000 mm
	Mm	Face towel & small fabric	(French fold) 300-380 mm
	Mm		(4 Fold) Max 50 mm
Folding Length	Mm	Bath towel	(French fold) 1800 mm
	Mm		(4 Fold) Max 2000 mm
	Mm	Face towel & small fabric	(French fold) 1000 mm
	Mm		(4 Fold) Max 1000 mm



Saree Polishing Machine



6 feet wide working capacity suitable for cotton, silk, handwork and stone work saree

Unique automatic starch sprayer system for uniform starch application and saree polishing

Adjustable ironing speed (0.8–3 m/min) & temperature with emergency stop & trolley-mounted design

One-touch microcontroller operation with electrical heating option up to 12 kW

GEI Saree Polishing Machine

Specification	Units	SRE1	SRE2	SRG1	SRG2
Cylinder Dimensions	Mm	400x1600	400x1600	400x1600	400x1600
Supply Tension	Mm	220x440	220x440	220x440	220x440
Heating Source		Electrical	Electrical	-	-
Heating Power	kW	10	12	-	-
Gas Consumption Net. Gas	m ³ /h	-	-	2.71	2.82
LPG	kg/h	-	-	2.02	2.5
Motor(s)	hp	0.75	0.75	0.75	0.75
Ironing Speed, Variable	m/min	0.8–3	0.8–3	0.8–3	0.8–3
Hourly Production (Recommended Moisture 50%)	mtr	180	180	180	180
Packing Dimensions (wxdxh)	inch	36x40x72	36x40x72	36x40x72	36x40x72
Weight	kg	285	285	300	300



Dry Cleaning Machine

HYDRO CARBON

This machine is used when clothes cannot be washed with water; it uses petroleum-based solvents to clean, spin, and dry garments efficiently while protecting delicate fabrics.

Compact, corrosion-resistant stainless steel body with easy installation, suspended structure (no anchor bolts needed) and low-maintenance design.

Large-diameter drum delivers strong centrifugal force for superior washing and spin-drying performance across all dry-cleaning fabrics.

Advanced touchscreen control system with 30 programmable wash cycles and user-friendly English interface.

Efficient drying and recovery system with double filtration and compressor air-cooling for optimized performance and energy savings.

GEI Dry Cleaning Machine Hydro Carbon

Specification	Units	GDC-8(HC)
Capacity	Kg	8
Drum Volume	L	163
Washing Speed	Rpm	42
High Speed Extraction	Rpm	850
Electrical Power	Kw	9
Voltage	V	220
Air Compressor Consumption	L/hr	4
Air Compressor Pressure	Kg/cm ²	4-6
Air Compressor Tube Size	Mm	8
Overall Dimension (LxWxH)	mm	1600x1060x1900
Weight of the Equipment	Kg	920





Dry Cleaning Machine

PERC

The **GEI Perc Dry Cleaning Machine** delivers efficient, high-quality cleaning using perchloroethylene. Designed for reliability, it ensures gentle yet effective stain removal, fast processing, and consistent results. Built with durable materials and advanced controls, it provides safe operation, smooth performance and long service life for professional dry-cleaning needs.

Provides efficient and high-quality garment cleaning using perchloroethylene for effective stain and dirt removal.

Advanced cleaning system ensures gentle fabric care while maintaining consistent professional results.

Fast processing cycle improves productivity and reduces turnaround time for dry-cleaning operations.

Robust construction with advanced control systems ensures safe operation, reliable performance, and long service life.

GEI Dry Cleaning Machine PERC

Specification	Units	GDC-6(PERC)	GDC-8(PERC)	GDC-10(PERC)	GDC-12(PERC)	GDC-15(PERC)
Capacity	kg	6	8	10	12	15
Drum diameter	cm	85	137	174	204	250
Drum width	mm	718	718	718	718	718
Drum speed	r/min	300	340	430	480	600
Working tank volume	L	57	90	90	100	134
Wash speed	r/min	34	34	34	34	38
Extraction speed	r/min	400	400	400	400	400
Electrical power	KW	25	25	25	30	30
Overall dimension (LxWxH)	mm	1600x1150x1960	1800x1280x2050	1800x1320x2110	1800x1360x2150	2070x1550x2150
Weight	kg	750	1000	1100	1200	1350



Vacuum Ironing Table

The **GEI Vacuum Ironing Table** is designed for effortless Ironing of garments.

Perforated table with heat-resistant silicon foam and cloth covering ensures smooth, durable ironing support.

Powerful suction blower removes heat and moisture while firmly holding garments in place for precise ironing.

Built-in utility tray and iron stand provide convenient access to tools during operation.

Unique spring stand keeps the iron wire away from the workspace, improving operator efficiency and safety.

GEI Vacuum Ironing Table

Specification	Units	GVIT
Table Size	Mm	900 X 850 X 1450
Vacuum Area	Mm	700 X 1200
Suction Blower	Hp	0.75

GEI Electric Steam Generator

Specification	Unit	GSG-01	GSG-02	GSG-04	GSG-06
Number of Steam Iron	Nos	1	2	4	6
Power Required	kW	3	6	12	18
Steam	Kg/hr	2	7.5	16	24
Steam Pressure	Bar	5	5	5	5
Dimension	Mm	330 x 280 x 410	710 x 560 x 790	660 x 610 x 860	660 x 610 x 860



Flat Bed Press

The **GEI Flat Bed Press Machine** is designed for efficient pressing of garments and linens. With pneumatic operation, heated head, vacuum suction bed, dual-button safety system, and automatic release, it ensures high-quality results, operator safety, and fabric protection.

Compact, corrosion-resistant stainless steel body with easy installation, suspended structure (no anchor bolts needed) and low-maintenance design.

Advanced touchscreen control system with 30 programmable wash cycles and user-friendly English interface.

Large-diameter drum delivers strong centrifugal force for superior washing and spin-drying performance across all dry-cleaning fabrics.

Efficient drying and recovery system with double filtration and compressor air-cooling for optimized performance and energy savings.

GEI Flat Bed Press

Specification	Units	GFB
Bed Size	Mm	600 x 1500
Blower Motor	HP	0.5
Heating Electricity	Kw	0.75
Compressed Air	Bar	0.75
Overall Dimension	Mm	1200 x 1250 x 1500



Spotting Table

The **GEI Spotting Machine** is designed for effective stain removal before washing. Made from durable 304 stainless steel, it features dual vacuum bucks, built-in steam generator, and multiple dispensing guns for treating various stains, ensuring precise cleaning and long-lasting performance.

Designed for effective pre-wash stain removal on garments, especially on cuffs, collars, and localized fabric spots.

Equipped with vacuum suction bucks that firmly hold garments in place for precise stain treatment.

Built-in steam generator with steam and air gun enables efficient removal of tough stains like oil, ink, blood, food, and beverage marks.

Constructed from 304-grade stainless steel with chemical dispensing bottles and guns for durable, professional laundry use.

GEI Flat Bed Press

Specification	Units	GSM-3
Steam Consumption	Kg/hr	10
Steam Inlet	Inch	1.25
Suction Motor	Hp	0.75
Chemical Gun	Numbers	2
Steam Air Gun	Numbers	1
Chemical Bottle	Numbers	6
Heater	Kw	2
Air Pressure	Bar	3
Dimension (WxDxH)	Mm	1150 x 680 x 1560

Laundry Accessories



Dry Linen Trolley



Plastic Trolley



Wet Linen Trolley

Technical Specifications

Size	Length	Depth	Height
Big	1220	760	915
Small	920	610	690



Pre Wash Table



SS Working Table

Pre Wash Table

Length	Depth	Height
1520	610	860

SS Working Table

Length	Depth	Height
1520	610	860



Laundry Locker



Storage Rack

Laundry Locker

Size	Length	Depth	Height
4 Door	460	490	1545
6 Door	400	490	1850

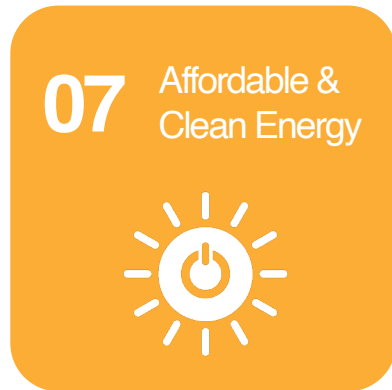
Storage Rack

Length	Depth	Height
1200	450	1800

Detergents & Chemicals



Product	Usage
SAC - 200	Emulsifier
SAC - 300	Alkaline booster
SAC - 400	Neutralizer
SAC - 500	Perfumed Fabric Softener
SAC - 700	Perfumed Fabric Detergent
SAC - 800	Antigreying Liquid
SAC - 900	Optical Brightener for white clothes
SAC - 1000	Rust stain remover (Use Gloves)
SAC - 1100	Fabric Freshner spray
SAC-Cuff & Collar	Stain remover
SAC-Hypo Bleach	For white clothes
SAC-Oxy Bleach	For coloured clothes
SAC-Magic Plus	Ink Stain remover



SUSTAINABLE DEVELOPMENT GOALS

We have achieved so far





Start your Laundry Journey with us



+91 9980803803/ 9611209756/ 9980880558/ 08028395871



www.laundrymachine.co.in



team@geilaundry.com



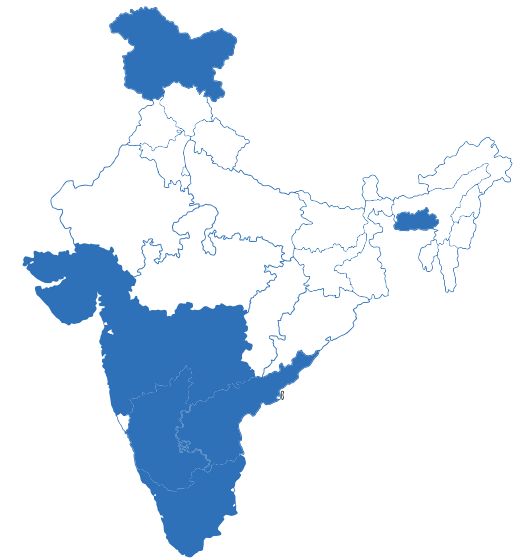
#158, 10th Main Rd, 3rd phase, Peenya, Bengaluru,
Karnataka 560058, India



SCAN HERE

Our Pan-India Distribution Network

Tamil Nadu Maharashtra Meghalaya Kerala
Telangana Gujarat Assam Jammu & Kashmir
Karnataka Andhra Pradesh



Disclaimer: Product specification are subject to change without notice, please contact us before placing order